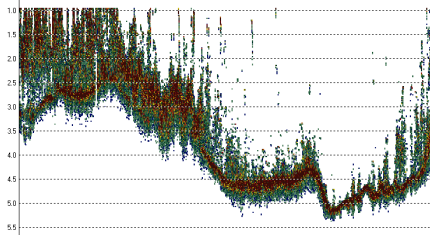




## *High Definition Soundings*

Full water column echogram recorded for absolute accuracy.



## *Any Boat Anywhere*

Rugged waterproof echo sounder and GNSS in one. Streamlined data collection process with touchpad controls and internal battery.

## *20 Hz Ping Rate*

Get total bottom coverage for maximum quality control and a clear view of the bottom.

## *Top Quality Precision GNSS*

Single and dual frequency, L-Band and RTK positioning options built-in. No cables; no problems.



## *Integrated UHF Radio*

Choose the RTK option and connect to your existing RTK base station with no need for an external radio.



## *On-Board Data Logger*

Record data on internal memory or an external USB drive. Output in real time through Ethernet, Bluetooth, Wi-Fi, or RS232 cable.