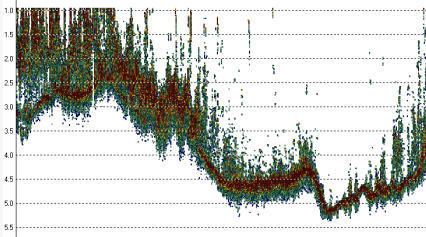




## *High Definition Soundings*

Full water column echogram recorded for absolute accuracy.



## *Internal Battery*

Survey for 8 hours without recharging. Ideal for small boats and personal watercraft.

## *20 Hz Ping Rate*

Get total bottom coverage for maximum quality control and a clear view of the bottom.

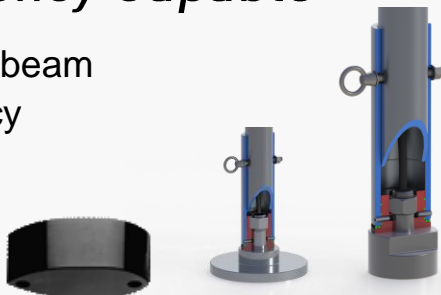
## *Use with any GPS Receiver*

Pass NMEA0183 GPS into the CEE ECHO to get a complete time-stamped hydrographic data set.



## *Dual Frequency Capable*

Standard, narrow beam and dual frequency transducers.



## *On-Board Data Logger*

Record the survey on internal memory or an external USB drive. Output in real time through Ethernet, Bluetooth, Wi-Fi, or RS232 cable.