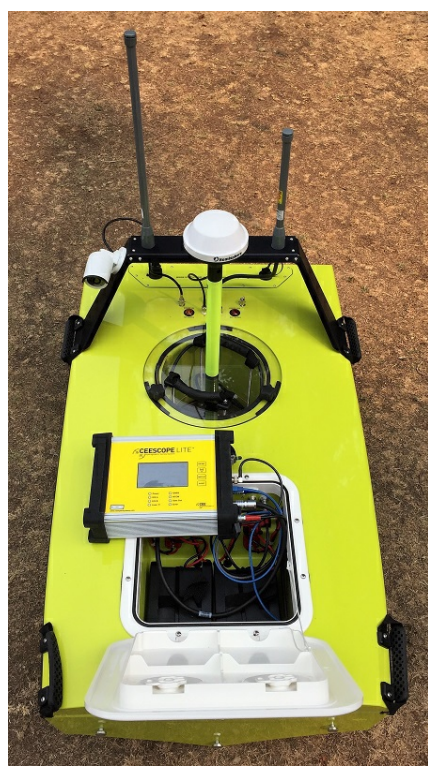




CEE-USV™ in the Spotlight

With long range antennae, video camera and a single beam transducer in the moon pool, the new CEE-USV is a fully grown-up option for surveyors wanting a professional standard USV and not a low-spec boat or floating science project. Remarkably, the complete electronics package fits under the water tight hatch courtesy of the brand new CEESCOPE-LITE echo sounder system designed specifically for this boat. Use the integrated GPS or a separate antenna - easy. Robust and sensible design all round results in a fantastic package.

Product News



So What's in the CEE-USV then?

The brain of the system is the new CEESCOPE-LITE echo sounder. With the usual spectacular CEESCOPE shallow water performance, the LITE adds a smaller form factor, additional heat dissipation and network IP telemetry to manage remote data acquisition. With ultra-simple connectivity simply turn on the CEESCOPE-LITE and start surveying.

Data may be acquired using a standard laptop WiFi connection, or with the matching long range CEE LINK radio module, and multiple connections are supported.

Take a look at the web page [HERE](#).



Simplicity for Field Crews

With fewer components and cables there is less to go wrong. This is the complete CEE-USV system complete with no cable spaghetti or confusing connections.

Read a **CASE HISTORY** describing this boat [HERE](#).



So What is the ARC-Boat then?

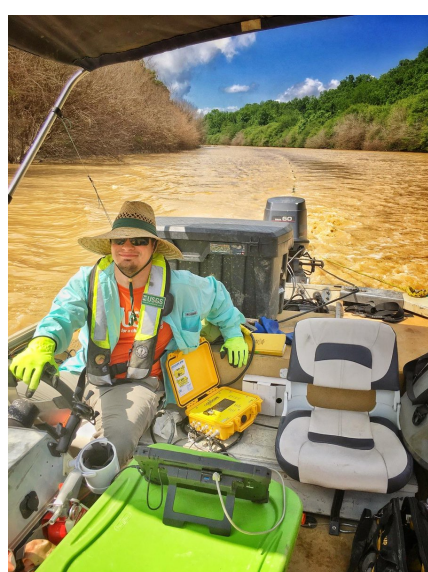
The CEE-USV is a collaboration between CEE and HR Wallingford. The vehicle used in the CEE-USV is the ARC-Boat designed for deploying ADCP profilers. CEE supplies that too. Read more about California DWR's NEW ARC-Boats [HERE](#).



Boat Design Rules

Small boats can't go fast. Large boats are harder to transport. Those are simple facts that boat design can't get round without some ingenuity: that is why the CEE-USV / ARC-Boat splits nearly in half.

Customer News - CEE Surveys



CEESCOPE L-Band for River Surveys

With Terrastar or Atlas L-Band signals enabled, the CEESCOPE gives a 10cm horizontal position accuracy and about 20cm vertical with no base station. The USGS were able to use the L-Band for approximate - non RTK precision - river bed elevation measurements during geophysical surveys on the Sunflower River, MS. A special towed array probing ground waters took position elevation and bathymetry information from the CEESCOPE echo sounder.



CEE-USV in Coal Mining Territory

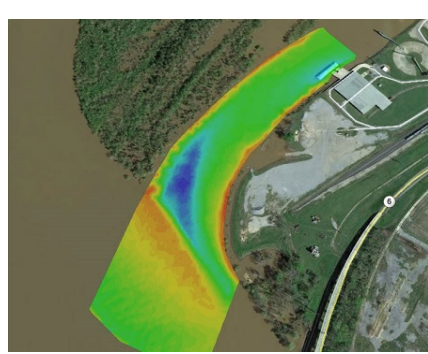
Mining surveys are perfect for the CEE-USV. The new boat was recently in action in a Western Canadian Coal mine. Starting with clean settling water reservoirs, the boat will also be used on coal tailings where things get a lot dirtier.



Fitness Freaks Prefer the CEESCOPE

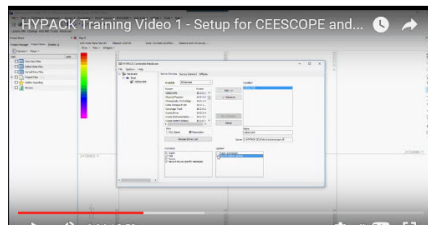
The CEESCOPE proved its shallow water credentials in Bhutan where the extreme environment required energetic surveyors. Without the CEESCOPE's 20 Hz ping rate and exceptional shallow water performance, it would have been impossible to collect any bathymetry data at all, although careful editing was still needed!

Software



Hydromagic 8 is Available

The latest version of Hydromagic includes extra CEESCOPE-friendly features, principally a greatly enhanced echogram display and ranging. If you have a CEESCOPE, download version 8 [HERE](#) to keep up.



HYPACK CEESCOPE Setup Video

If you forget how to set up your CEESCOPE or CEE ECHO with HYPACK, no need to resort to reading the manual. Just follow along to get started [HERE](#).

Conferences and Demos

CEE Demo Echo Sounders in the USA

Several more "old school" hydrographic echo sounder users switched to the CEESCOPE / CEE ECHO in recent months after trying the demo kit. Be careful if you try one, because you will probably want one. Contact [CEE HERE](#) to take the risk.



Video Library

CEE-USV in Action:

[\\$\[VT:119a9e7cf6a2f193:CEE-USVinAction\]\\$,](#)

ARC Boat on the Sacramento River:

[\\$\[VT:119a9e7cf6a2f195:ARC-BoatSacramento\]\\$,](#)

Contact Us:

[CONTACT CEE HYDROSYSTEMS - CONTACT FORM](#)

CEE HydroSystems USA, Inc.

701 Palomar Airport Rd, Suite 300
Carlsbad, CA 92011 USA
t: +1 760 492 4511
adrian.mcdonald@ceehydrosystems.com

CEE HydroSystems

1/12 Cecil Rd - Hornsby, NSW 2077
Australia
t: +61 2 9482 5880
sales@ceehydrosystems.com