



Unmanned Hydro Surveys for Hydro Power

It's hard to see the USV (the green speck) at the dam, but the survey above is being conducted using a CEE-USV™ remotely-operated boat in Quebec, Canada. Access on a manned boat is forbidden, making this is an ideal application for a USV. With all the focus on drones it's easy to start thinking a USV is a tool for every survey, when the reality quite different. At CEE we focus on offering unbiased and realistic recommendations about USV suitability - if you are considering going unmanned, maybe give us a call.

Product News



New CEESCOPE Features

The 2020 firmware for CEESCOPE™ and CEE ECHO™ sounders includes several **NEW** features.

Adaptive Blanking: The blanking distance (minimum measurable depth) now can be automatically modulated by the echo sounder, leading to **EVEN SHALLOWER** measurements. Particularly useful for USV surveys.

NovAtel GLIDE and STEADYLINE: These position augmentation options have been added to improve DGPS surveys when RTK is unavailable.

Shallow Mode: Now on LF and HF channels.

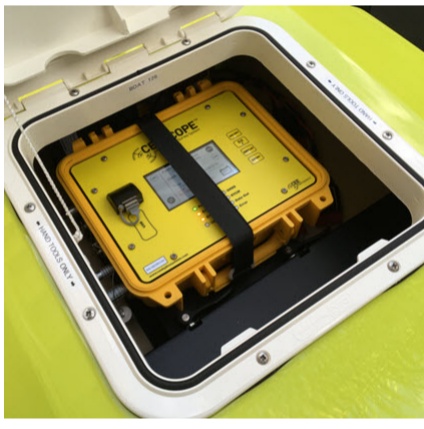
And More: Tweaks and improvements.

[CONTACT US](#) with your unit serial number.



CEE-USV Series Two Upgrades

In 2019 cabling changes to the CEE-USV™ were introduced to improve accessibility for installation and removal of the CEESCOPE-LITE™ echosounder. While not critical upgrades, CEE USA can perform the reconfiguration during a general service.



NEW! CEE-USV for CEESCOPE

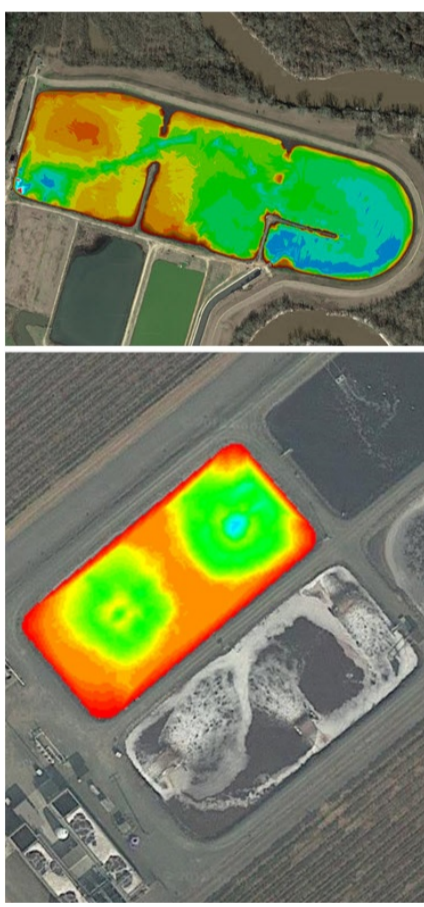
We have designed a new instrument compartment insert allowing the standard CEESCOPE to fit in the CEE-USV, offering CEESCOPE users a new upgrade route to unmanned surveying. While the CEESCOPE-LITE presents a better solution, utilizing an existing CEESCOPE may be a cost effective option.

CEE-USV™ - Icebreaker Class Surveying

Well, maybe not something that is a commonly-used benefit but recently we learned that when you arrive at the survey site and some thin fresh ice has appeared, you can still complete the survey. Watch the boat ride up onto the ice to break across the pond - just like the real thing.

[\\$\[VT:119a9e7cf6dee57d:CEE-USV_Icebreaker\]\\$,](#)

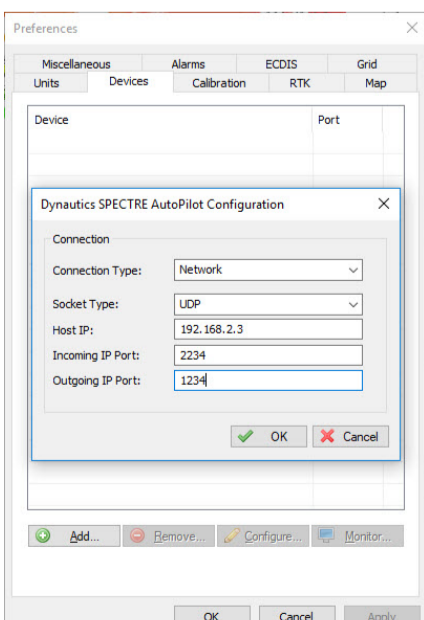
Customer News - Effluent Lagoons



Checking Aerator Performance

CEE HydroSystems' CEE-USV and CEESCOPE systems are in use with firms monitoring industrial and municipal waste water lagoons. The lagoons fill with sludge, and bacteria are used to digest the accumulating organic material. The CEESCOPE offers an easy to use tool for these firms, able to handle the often (very) shallow water depths. Reliant Water Technologies, manufacturer of the Lagoon Master™ aerator, generate sludge maps for clients. Reliant even use their CEESCOPE to find holes in the substrate drilled by circulating water. Such holes can allow wastewater to enter the groundwater - not a good situation.

Software News



Updated Hydromagic Plugin

The new CEE-PILOT™ robotic control package based on the Dynautics SPECTRE™ marine autopilot has a remarkable integrated interface with Hydromagic software. The latest Hydromagic release features new status messages and real time route progress updates. However there is still a lot more to come as the autopilot control gets even more capable. [CONTACT US](#) to get the new version.

Conferences and Exhibitions



Going to Oceanology 2020?

If you are visiting the Oceanology International exhibition in March, pay a visit to CEE HydroSystems UK partner SWATHE SERVICES - Stand G702.

Contact Us:

CEE HydroSystems USA, Inc.

701 Palomar Airport Rd, Suite 300

Carlsbad, CA 92011 USA

t: +1 760 492 4511

adrian.mcdonald@ceehydrosystems.com

CEE HydroSystems

1/12 Cecil Rd - Hornsby, NSW 2077

Australia

t: +61 2 9482 5880

sales@ceehydrosystems.com