



New Projects and New Products

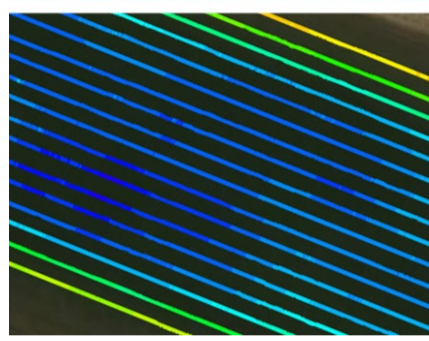
In a record-breaking 1/2Q 2019, we worked on several large special projects for military and government customers. These involved designing some new specialized shallow water surveying equipment to work alongside our CEESCOPE™ echo sounders. Some of the new products that we developed in these projects will be launched for all our customers in the second half of the year. These include a new USV telemetry module, an enhanced side-scan topside, and the CEE-PILOT™ USV robopilot.

Product News - CEE-PILOT™ Now Available



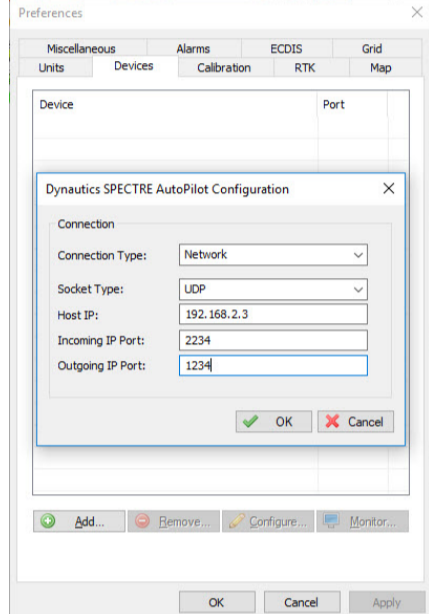
Remarkably Simple Robotic Control

Recently the CEE-USV™ hydrographic survey drone received its specialized CEE-PILOT™ robotic control system, developed in partnership with Dynautics Ltd and Eye4Software. We declined to patch together a system based on freeware, or community-based programming, but instead set the bar high for a fully integrated hardware and software solution. This approach was the only way to maintain CEE's unique usability and simplicity, even on a robotic USV. Learn more about the CEE-PILOT [HERE](#).



Integrated Hydromagic Interface

The robotic CEE-USV requires no additional software, no on-board PC, no extra data links, and adds no complexity to operations. The Hydromagic line plan may be either surveyed manually, or with a couple of clicks uploaded to the USV. The USV will then complete the survey pattern. Simplicity = reliability.



Professional Marine Autonomy

The Dynautics SPECTRE™ E-Boat module has been adapted to work on the CEE-USV but it is used in other advanced navigation applications worldwide. On the CEE-USV there are no serial ports or fiddly connections, just a single network (LAN) WiFi link from the boat to the shore. Visit Dynautics' web site [HERE](#).



CEE-PILOT™ - Can You Beat These Lines?

The video below shows the process from loading the Hydromagic survey lines to conducting the robotic survey. The lines are spaced 3m apart, with "precise cornering" mode not activated. So now performance is even better!

[\\$\[VT:119a9e7cf6c9af75:CEE_PILOT\]S](#)

New Product Alert - Tactical Side Scan

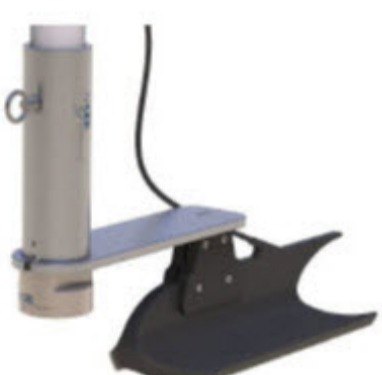
Tactical Side-Scan Starfish Interface

Military survey crews have high expectations in terms of equipment ruggedness and usability. In order to supply an "all in one" side-scan imaging package, CEE engineers took the popular Trittech StarFish and designed a waterproof, fully ruggedized battery-operated topside to replace the Trittech OEM unit. With a full day operation from the internal battery and IP67 water-proofing, the CEE TSF is a high quality option for demanding users.



Tactical Side-Scan and SBES

Recently CEE has supplied several combined side-scan and CEESCOPE single beam systems for military rapid-deployment area surveying. With operational simplicity and speed of mobilization impossible with any multibeam system, the blend of side scan for imagery and single beam for bathymetry provides an exceptionally well suited approach. [CONTACT US](#) to find out more about the CEE "combo" side scan packages.



Software News

CEESCOPE Driver for BeamworX

Subscription-based hydrographic data editing and acquisition specialists BeamworX recently developed a CEESCOPE driver for their NavAQ acquisition package. NavAQ now handles proprietary CEE sounding and echogram data. Take a look at BeamworX [HERE](#).



Conferences and Exhibitions

Coming to ESRI San Diego 8-12 July?

If you are visiting San Diego for the ESRI conference then please get in touch if you want to break out for a couple of hours and see a demonstration of CEE equipment. With our demo lakes close by, it is easy to check out the CEESCOPE, CEE ECHO, CEE-LINE, or CEE-USV. [CONTACT US](#) to arrange a demo.



CEE HydroSystems USA, Inc.

701 Palomar Airport Rd, Suite 300
Carlsbad, CA 92011 USA
t: +1 760 492 4511
adrian.mcdonald@ceehydro.com

CEE HydroSystems

1/12 Cecil Rd - Hornsby, NSW 2077
Australia
t: +61 2 9482 5880
sales@ceehydro.com