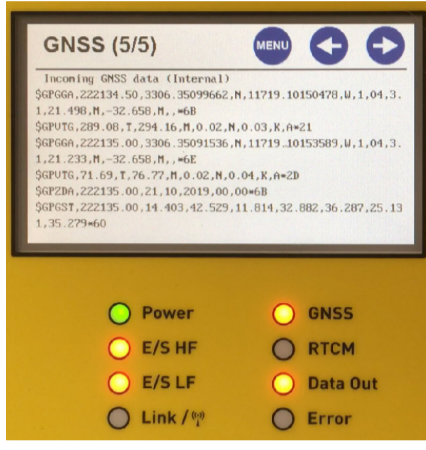




CEE Principles - Rapid Mobilization and Data Quality

Two factors that we try to influence with our hardware and software design are the length of time it takes to set up for a survey, and the quality of the data obtained. Here we have a couple of examples related to the first of these. Below you will see our fantastic new software addition to our CEE ECHO™ GNSS interface, and an example of users who have selected CEE equipment to simplify and standardize their surveys.

Product News - GNSS Terminal Viewer



End GPS Interface Downtime

Now using the CEE ECHO™ and CEESCOPE™ with an external GNSS receiver has got even easier. The latest software update adds a terminal viewer window to the GNSS menu so you can see EXACTLY what is being received. To activate this feature with a firmware update [CONTACT US](#).

Eliminate interface headaches with this self-contained troubleshooting tool now included in the GNSS menu; no more guessing about the receiver setup, interface baud rates, or NMEA messages selected. No more scrambling for a PC with a terminal program if your GNSS is not cooperating! Watch the video of the new feature below:

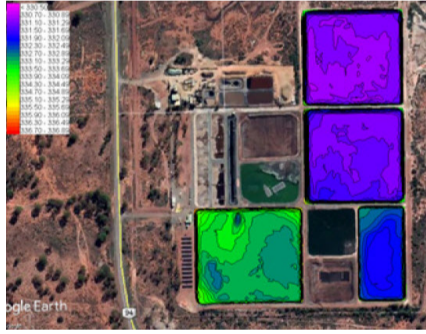


Customer News



Rapid Mob Kits for Navy Surveyors

Military surveyors in the Royal Australian Navy recently received their new CEE tactical singlebeam and sidescan kits for rapid mobilization surveys. With new packaging designed specifically for the application, and ruggedized StarFish and CEESCOPE topsides, units are deployed on board survey ships HMAS Leeuwin and Melville, as well as survey launches Paluma, Mermaid, Shepparton and Benalla. Learn more about the RAN use cases [HERE](#), and the tactical kit specs [HERE](#).



Xylem rQPOD + CEESCOPE-USV™

For a simplified on-board instrumentation package for their mini USV, Xylem installed the self-contained CEESCOPE-USV echo sounder and GPS with built-in long range telemetry. Read the Xylem and HYPACK case history [HERE](#).

Software News

```
EC1 1 53194.589 3.642
EC1 1 53194.656 3.642
EC1 1 53194.714 3.773
POS 2 53546.437 1819784
QUA 2 53546.437 7 5.000
RAW 2 53546.437 4 47032
MSG 2 53546.437 $GPGGA,
FIX 99 53546.682 5722 1
EC1 1 53194.974 4.364
POS 2 53546.640 1819785
QUA 2 53546.640 7 5.000
RAW 2 53546.640 4 47032
MSG 2 53546.640 $GPGGA,
MSG 2 53546.640 $GNVTG,
EC1 1 53195.042 4.560
EC1 1 53195.110 4.593
```

! HYPACK ALERT - Data Timing !

Recently some HYPACK 2019 users have seen timing discrepancies in RAW data resulting from incorrectly configured drivers. It's important to pay close attention to the setup of the CEESCOPE and GPS drivers and ensure the time base is properly selected. This is particularly relevant for new 2019 installations as the default CEESCOPE check box entry has changed. [READ THIS DOCUMENT](#) before using HYPACK 2019 with CEE network echo sounders or [CONTACT US](#) to get instruction for more complex equipment setups.

Conferences and Exhibitions



HYPACK 2020

Kick off the New Year with the the annual HYPACK user training conference, this time in Jacksonville FL. Come along and get some HYPACK training and visit CEE in the exhibit hall at the same time.

Contact Us:

CEE HydroSystems USA, Inc.
701 Palomar Airport Rd, Suite 300
Carlsbad, CA 92011 USA
t: +1 760 492 4511

adrian.mcdonald@ceehydrosystems.com

CEE HydroSystems

1/12 Cecil Rd - Hornsby, NSW 2077

Australia

t: +61 2 9482 5880

sales@ceehydrosystems.com